

Train to Teach in Northamptonshire

Northamptonshire School-led Teacher Training Places



 **TEACH**
Northamptonshire

www.teachnorthamptonshire.com

Train to Teach in Northamptonshire

Northamptonshire School-led Teacher Training Places



Change a young person's life for the better.

Clear development pathways to leadership make Northamptonshire a location of choice for 7,000 ambitious, high achieving teaching professionals, who go home each day knowing they've made a difference.

To sustain fast population growth we now need to recruit, develop and train hundreds more exceptional primary and secondary school teachers and leaders. With professional development firmly at the top of our agenda, and good teachers in demand, you won't be disappointed if you choose to join us.



Why Northamptonshire?

Ambitious, forward looking and keen to make things happen, Northamptonshire has serious appetite for growth, welcoming employment and housing development. Perfectly situated at the heart of the country, we offer the most affordable homes in the UK within a one hour drive-time of London. We also have one of the highest levels of employment in the country. This means excellent career development prospects in schools all around the county, both in management and pastoral roles, ensuring the best possible start in life for all our young people, irrespective of background or circumstance.



Train to Teach in Northamptonshire Open Evening

Franklin's Gardens
Northampton
14 September 2017
5 - 7pm

Register today at
theplacetoteach.com

Simon Young

Teacher of Maths & Numeracy Coordinator,
Sir Christopher Hatton Academy



Northamptonshire has the country's highest density of teaching schools which makes it highly aspirant and a really exciting place for a teaching career.

Local networks are strong and supportive and as an NQT especially, having the right support is the most important thing. I was encouraged to take on additional responsibility immediately after my NQT year, really early in my career.

"There's a career for you here in Northamptonshire. Now I'm here, I really couldn't see myself teaching anywhere else."

Quality of life for less

'Greatly underrated' and 'much better value' than its neighbours Oxfordshire and Cambridgeshire (The Sunday Telegraph) Northamptonshire is also ranked by The Times as one of the UK's best places to live in 2017.

How to Apply


We encourage you to apply early as primary school places are especially popular.

All applications must be submitted through UCAS.

ucas.com

www.teachnorthamptonshire.com

Teacher Training Places



	5 Wells Teaching School Alliance	Brooke Weston Teaching School Alliance	Fairfields Teaching School Alliance	The Grand Union Training Partnership and Sponne School TS	Hatton Teaching School Alliance	Inspire Teaching School	Maplefields Teaching School Alliance	Montsaye Academy	Northampton Teacher Training Partnership (NTPP)	Pen Green Centre	Teach Northants	The Pilgrim Partnership	University of Northampton	Upton Meadows Primary School
Primary	✓	✓	✓	✓	✓	✓	✓		✓	✓	✓	✓	✓	✓
Early Years / 3 - 7										✓				
Art & Design							✓	✓	✓			✓		
Biology		✓		✓	✓		✓	✓	✓			✓		
Business Studies				✓				✓				✓		
Chemistry		✓		✓	✓		✓	✓	✓			✓		
Computing				✓	✓			✓	✓			✓		
Design & Technology							✓	✓	✓			✓		
Drama								✓	✓			✓		
English		✓		✓	✓			✓	✓			✓		
Geography		✓		✓	✓			✓	✓			✓		
History		✓		✓	✓			✓	✓			✓		
Mathematics		✓		✓	✓		✓	✓	✓			✓		
Modern Foreign Languages		✓		✓	✓				✓			✓		
Music									✓			✓		
Others **								✓	✓			✓		
Physical Education				✓			✓	✓	✓			✓		
Physics		✓		✓	✓			✓	✓			✓		
Religious Education					✓			✓	✓			✓		



KEY

- ✓ Training places available
- ** Others includes:
 - citizenship
 - dance
 - economics
 - health and social care
 - leisure and tourism
 - media studies
 - psychology
 - social science

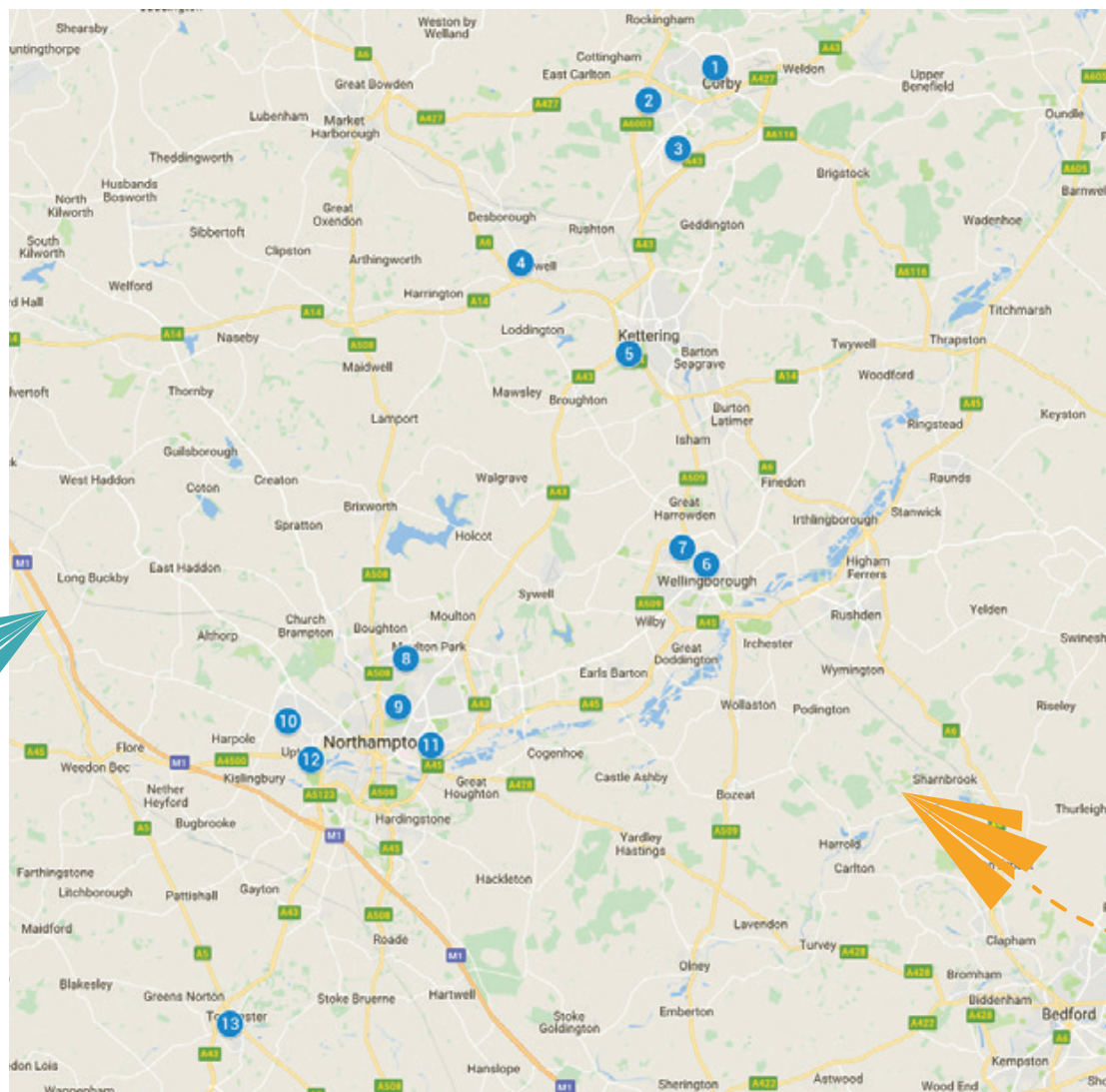


Teacher Training School Locations



KEY

- 1 Pen Green Centre
- 2 Maplefields Teaching School Alliance
- 3 Brooke Weston Teaching School Alliance
- 4 Montsaye Academy
- 5 Inspire Teaching School
- 6 Hatton Teaching School Alliance
- 7 5 Wells Teaching School Alliance
- 8 University of Northampton
- 9 Fairfields Teaching School Alliance
- 10 Teach Northants
- 11 Northampton Teacher Training Partnership (NTPP)
- 12 Upton Meadows Primary School
- 13 The Grand Union Training Partnership and Sponne School TS



Teacher Training Schools



Dear prospective teaching colleague,

Northamptonshire based Teaching Schools, Initial Teacher Training Providers and our Higher Education University partners work collaboratively to ensure the quality of training you receive in Northamptonshire equips you for the best possible start to your teaching career.

Our school based training offers the opportunity to learn from teachers who pass on their passion for learning every day in classrooms across the county. This 'on-the-job' training is supplemented by high quality academic knowledge, underpinning your teaching practice from our University partners.

With a large number of Teaching Schools across the county, not only can you be confident that your initial teacher training will be of the highest quality, but also reassured by an extensive range of continuous professional development on offer throughout your career. Our Leadership Pathway courses provide training for teachers from newly qualified colleagues (NQTs), through to colleagues who have recently been appointed as new headteachers. For more information visit our collaborative website: **tsp.education**

If you have any questions please feel free to contact any of the individual Teaching Schools using the information in this brochure. You can be assured of a warm welcome and a helping hand with your application.

We look forward to welcoming you to a teaching career in Northamptonshire.

**Northamptonshire School-Direct Initial Teacher
Training Providers**

5 Wells Teaching School Alliance



The 5 Wells Teaching School Alliance is based at Redwell Primary School, Wellingborough. We offer non-salaried Primary School Direct Initial Teacher Training and have an excellent track record for supporting all our students. We work with the University of Leicester for the joint delivery of the PGCE course, an outstanding provider. The Lead School for ITT is Park Junior School (Head Teacher - Mr David Tebbutt) who organise the programme and placements alongside the University of Leicester.

We have a wealth of opportunities for different types of schools as we presently have over 25 good or outstanding schools (Alliance members) who are willing to offer placements to students. We strive to meet the needs of every student, providing personalised help and advice ensuring a wide range of experiences are provided during the PGCE. All our students for the past 3 years have been employed locally as a result of the support provided.

We ensure you are fully supported to get Qualified Teacher Status (QTS). We offer specialist bespoke days in SEMH, EAL and inclusion. This is an ideal route for students to have a first class start to their teaching careers.

Please feel free to contact us for further information on 01933 400549 or by email to Victoria.Brennan@5WellsTSA.org.uk

Contact us

01933 400549
enquiries@5WellsTSA.org.uk

Redwell Primary School
Barnwell Rd, Wellingborough,
NN8 5LQ.



Brooke Weston Teaching School leads an alliance of primary and secondary schools and academies across Northamptonshire, Leicestershire, Cambridge and the Fenlands.

The key to our success is growing outstanding teachers. We have a longstanding commitment to, and experience of, supporting the professional development of our teachers and leaders.

Our School Direct programme gives you diverse experience of working across our wide range of schools and learning directly from our highly experienced teaching staff. We offer an outstanding learning environment and ensure that your training journey is tailored to your needs, with a supportive structure that will nurture and inspire you to achieve your best. We harness your ambition with immediate access to our talent management framework, providing a clear pathway for progression and your future career prospects.

Our Alliance is delighted to be working with University of Leicester (secondary) and University of Northampton (Primary). In addition to Qualified Teacher Status, you will also graduate with a Post-Graduate Certificate in Education (PGCE) which includes 60 credits towards a full Master's degree.

We look forward to welcoming enthusiastic, ambitious and passionate trainees to our 2017/18 programme. For eligibility and to find out more, please contact the Brooke Weston Teaching School.

Brooke Weston Teaching School Alliance



Contact us

01536 397013
teachingschool@brookeweston.org

Brooke Weston Teaching School
Alliance, Coomb Road, Corby,
Northamptonshire, NN18 8LA.



Fairfields Teaching School Alliance



Contact us

01604 777895
teachingschool@fairfields.northants.sch.uk

Fairfields School,
Trinity Avenue, Northampton,
Northamptonshire, NN2 6JN.

Fairfields Teaching School Alliance is based at the Outstanding Fairfields School in Northampton, offering Primary School Direct Initial Teacher Training on our PGCE courses. We are very proud of our excellent partnership with the very experienced University of Derby, with whom we run both forms of Primary School Direct (the salaried route - 24ZQ and the tuition route - 24ZM) at PGCE level. The University's School Direct programmes, including ours, were judged as "outstanding" by Ofsted in November 2015.

Our School Direct training course is ideal for trainees who are looking for hands-on in-school training, learning from teachers who deliver lessons every day. We offer high quality training by paying attention to developing both the knowledge and confidence of our trainees.

We ensure that you feel part of our school community from day one of your training, giving you personalised help and advice, taking your needs into consideration when planning your in-school training placements.

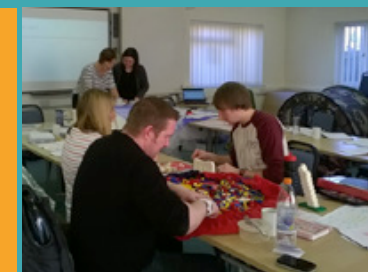
We ensure you are fully supported to get Qualified Teacher Status (QTS), offering bespoke additional training where necessary. In addition to QTS you will also graduate with a PGCE, including 60 Master's credits. Our courses can be funded by student finance and trainees could be eligible for bursaries.

The Grand Union Training Partnership is part of the Swan Teaching School Alliance and is based at the Outstanding Sponne School in Towcester. We are an established school-centred initial teacher training consortium with 18 years' experience training teachers in Northamptonshire and Milton Keynes.

All courses are full-time lasting one year and lead to Qualified Teacher Status (QTS) as well as a Post-Graduate Certificate in Education (PGCE) which includes 60 credits towards a full Master's degree through the University of Leicester, utilising their extensive academic resources. Working closely with a network of primary and secondary schools, the scheme is conscious of its role in training local people for employment in their home area. Our scheme is a hands-on school based programme where the majority of time is spent in the classroom working alongside expert practitioners. A dedicated team of experienced colleagues support you throughout the year.

Our aim is to produce reflective, confident professionals who are fully prepared to start a successful teaching career. All recent graduates have secured employment in their chosen geographical area with, typically, 80% of them achieving employment in the local area, most within our training schools. Our courses can be funded by student finance and trainees could be eligible for bursaries up to £30K in shortage subjects.

The Grand Union Training Partnership and Sponne School TS



Contact us

01327 350284 Ext.253
gutprecrutment@sponne.org.uk

Sponne School, Towcester,
Northamptonshire, NN12 6DJ.

Hatton Teaching School Alliance



Contact us

01933 226 077
teachingschool@hattonacademy.org.uk

Hatton Teaching School Alliance
Wellingborough,
Northamptonshire.

Hatton Teaching School Alliance is based at the Outstanding Sir Christopher Hatton Academy in Wellingborough. We offer Primary and Secondary School Direct Initial Teacher Training on our PGCE courses. We ensure that you feel part of our school community from day one of your training, giving you personalised help and advice, taking your needs into consideration when planning your in-school training placements.

We ensure you are fully supported to get Qualified Teacher Status (QTS), offering bespoke additional training where necessary. In addition to QTS you will also graduate with a Post-Graduate Certificate in Education (PGCE) which includes 60 credits towards a full Master's degree. Our courses can be funded by student finance and trainees could be eligible for bursaries of up to £30k in shortage subjects.

Our School Direct training course is ideal for trainees who are looking for hands-on in-school training, learning from teachers who deliver lessons every day. We believe that we offer high quality training by paying attention to developing both the knowledge and confidence of our trainees.

Please contact us for more information, or to find out about our 2-days of FREE school experience for eligible candidates.



Inspire Northamptonshire is the Initial Teacher Training strand of The Inspire Teaching School Alliance, a group of over 40 schools across the Northamptonshire region. We are here to give you the best possible opportunities to grow into an innovative and highly skilled primary school teacher. As well as qualifying with QTS, you will obtain a PGCE, a level 1 in Philosophy for Children, become a teacher of mindfulness and be given effective training in behaviour for learning. You can also obtain Master's Degree credits at level M should you wish to.

In partnership with the University of Northampton, who will provide you with the theoretical underpinnings that will guide your future practice, Inspire offers you the opportunity to train as a primary school teacher through the School Direct training route. We are privileged to have access to a wealth of teacher mentors who have already transformed the lives of many children and who can help you to do the same.

Our aim is to develop inspirational and reflective teachers who learn their craft through ongoing supportive training opportunities. When you have successfully qualified, we hope that you may consider remaining within our network of schools so that we can continue to help you to become the teacher that you wish to be.

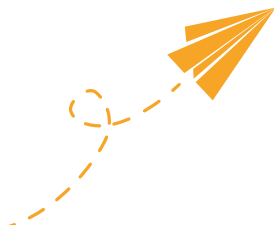
Inspire - Hall Meadow Primary School



Contact us

01604 434610
office@inspireteachingschool.org

2 Swan Court, Lamport,
Northants, NN6 9ER.



Maplefields Teaching School Alliance



Contact us

01536 424090
lmorgan@maplefields.northants.sch.uk
tso@maplefields.northants.sch.uk

Maplefields Academy
Tower Hill Road, Corby, NN18 0TH.

Maplefields Teaching School Alliance is based at the Outstanding Maplefields Academy in Corby. Whilst designated to become a National Teaching School in 2014 we have a long history of providing school to school support, running courses to support continuing professional development, supporting Initial Teacher Training and providing health checks and consultancy through school improvement work both within Northamptonshire and beyond.

We have carefully formed our alliance ensuring we have the skills, knowledge and capacity to support our responsibility for leading a self-improving school system. Together we are committed to achieve this in; supporting teacher training, school to school support, continuing professional development and training, research and development. We are committed to sharing our SEN skills and knowledge with mainstream and special schools to ensure all pupils within our alliance are given the best opportunities in order to achieve highly successful outcomes.

School Direct enables graduates to develop close links with local schools gaining real first-hand school experience as well as receiving academic and university support whilst training to teach at primary or secondary level.

We have a strong tradition of supporting trainees through the GTP programme and building our skills, knowledge and expertise.

Please contact us for further information.

Montsaye Academy is a lead school for Initial Teacher Training, working with the Pilgrim Partnership. We have a long-standing record of success and have employed a number of our trainees. Experienced mentors will support and guide you throughout your training to gain Qualified Teacher Status and the opportunity to graduate with a Post-Graduate Certificate in Education. You will work with the pastoral team to undertake the role of Form Tutor within our House system. In addition, you will complete a six-week placement at another school in term three to further your teaching experience.

The success of our provision is clearly endorsed by our trainees, past and present:

'My school provided a mentor to help me plan and deliver lessons and gave constant feedback, help and encouragement. Regular observations of my teaching helped me to improve my classroom persona and delivery of my subject content.'

Rachel ITT Maths trainee

'Doing my secondary training at Montsaye has been a wonderful experience. The school has a real community feeling and everyone made the trainees feel a part of this from day one.'

Lauren ITT Computer Science trainee

Please contact Karolyn Claypole at Montsaye Academy for more information, or to find out about our school experience opportunities.

Montsaye Academy



Contact us

01536 418844 Ext 154
kclaypole@montsaye.northants.sch.uk

Montsaye Academy
Greening Road, Rothwell,
Northants, NN14 6BB.

Northampton Teacher Training Partnership (NTPP) and Northampton School for Boys



NTPP is a long established School Centred Initial Teacher Training (SCITT) provider based in Northamptonshire with a vision to provide high quality teachers to meet the needs of local schools.

Partnership schools cover a range of circumstances including those in challenging socio-economic circumstances and those judged as requires improvement which means all our trainees are highly prepared for employment.

You will be based at Northampton School for Boys, an Ofsted outstanding school (Nov 2014) with excellent facilities and Teaching school status from 2012.

We offer a one year full time secondary (11-16) teacher training course in which you will obtain the award of PGCE and QTS. Our post-graduate qualification is validated by Newman University, Birmingham and worth 60 credits at Master's level.

We encourage applications from all spheres of the community regardless of age, race, disability, religion and gender.

A 1 year primary PGCE is also available through us in conjunction with the University of Northampton.

Last year...

- OUTSTANDING COURSE COMPLETION RATES
100% of trainees successfully gained QTS.
- OUTSTANDING EMPLOYMENT RATES
100% of trainees employed in the last 3 years.
- 100% of trainees rated as OUTSTANDING or GOOD teachers
- 69% of trainees employed in Partnership Schools, a huge strength of NTPP.

Contact us

01604 258662
nntp@nsb.northants.sch.uk
@nntp_scitt

NTPP, Northampton School for Boys, Billing Road, Northampton, NN1 5RT.

At Pen Green we offer two School Direct routes to qualified teacher status (QTS), the salaried route and the PGCE. The salaried route is available for those candidates with three or more years' career experience in a relevant post, for example a teaching assistant, learning support assistant or family support worker. The PGCE is a more gradual route to teacher status and is suitable for recent graduates or career changers.

School-led teacher training is designed for trainees who want or already have, hands-on experience in a school. Our School Direct Programme is delivered at Pen Green Research Base, Corby and accredited by the University of Hertfordshire. Trainees on a school-led programme have the chance to learn on the job, working with experienced colleagues, and putting their developing skills into practice preparing trainees to be well-informed and confident teachers.

Our School Direct programme is available to graduate candidates wishing to work in primary schools, with a focus on children aged 3 to 7 years. Although our training is centred on the Early Years Foundation Stage and Key Stage One strands of the national curriculum, once qualified, candidates will be able to teach children up to 11 years.

Pen Green Research, Development and Training Base



Contact us

01536 443435
Enquiries@pengreen.org

Pen Green Research, Development
and Training Base
Trinity Avenue, Northampton,
Northamptonshire, NN2 6JN.

Teach Northants



Teach Northants is a primary SCITT based in Northampton. Our partnership consists of a variety of 12 primary schools across Northamptonshire and Buckinghamshire.

Our key aim is to work with other schools in a collaborative way to provide highly effective initial teacher training across the primary and secondary age range. We are able to provide salaried and training routes in our partnership schools, alongside high quality, tailored professional development sessions which explore the essentials of outstanding classroom practice. All professional development sessions take place in the excellent facilities at our purpose built training centre, which include conference and training rooms.

Trainees will be provided with personalised in-school support from a highly skilled mentor to guide them through successful completion of the QTS course, as well as a visiting tutor with whole school leadership and subject specific training experience.

As a smaller SCITT, we are able to ensure that the support trainees receive is of the highest quality and enables them to develop into successful, inspiring and motivated practitioners.

If you are considering primary or secondary teacher training on a one year course leading to Qualified Teacher Status, we may be the provider for you.

The Pilgrim Partnership is an Initial Teacher Training (ITT) provider offering school-centred teacher training. The Partnership prides itself on providing comprehensive and individualised training programmes which incorporate a wide range of training experiences. The Partnership's partner schools are in and around Bedfordshire, Cambridgeshire, Hertfordshire, Northamptonshire and Milton Keynes. The Partnership has excellent relationships with its partner schools, allowing trainees to work alongside expert classroom practitioners to become good and outstanding teachers. Teachers in the partner schools are excellent practitioners and are eager to share their skills, knowledge and practice with the next generation of teachers.

The Partnership is looking for inspirational teachers and the school leaders of the future. The Partnership wants to train the most ambitious trainees who will embrace all of the opportunities the Partnership offers and so begin their pathway to becoming outstanding teachers.

We pride ourselves in offering a more personalised programme with a journey that begins as soon as you contact us, whether it's at one of our events, or just a chat on the phone. We will guide you all the way, from 'just thinking about teaching,' to getting your first job. But we don't stop there; we're also here to give advice about your career progression.

The Pilgrim Partnership

"Our Vision for Excellence is to train inspirational, good and outstanding teachers with the potential to be future leaders. This is achieved by offering tailored, bespoke teacher training, specific to the trainees' needs, delivered in a supportive, nurturing, real life environment."



Contact us

01604 460004 Ext. 110
enquiries@teachnorthants.org

The Duston School
Berrywood Road, Duston,
Northampton, NN5 6XA.

Contact us

Gill Busby for secondary enquiries
01234 827145
Jackie Atkin for primary enquiries
01234 408590

The Pilgrim Partnership
Northampton shire, Bedfordshire
and Milton Keynes.

University of Northampton



Contact us

elaine.batchelor@northampton.ac.uk

University of Northampton
Park Campus, Northampton.

The University of Northampton has been training primary teachers for over 40 years. We work successfully in partnership with over 350 primary schools to integrate theory with innovative practice to develop inspirational primary teachers.

We offer three year undergraduate degrees (BA Primary) and one year postgraduate courses (PGCE), both with Qualified Teacher Status (QTS). Our PGCE is offered through both University and School Direct (training and salaried) places.

As a recognised ITT Provider we can recommend trainees for QTS and award academic qualifications with an Ofsted rating 'Good' (2014).

In recognition of good provision and outcomes we have been awarded a three year allocation of PGCE places; employment rates are consistently high and all trainees use a free app to track their progress.

The quality of teaching at the University of Northampton is rated as TEF GOLD.



Upton Meadows Primary School is the lead school in an alliance of seven local schools in Northampton. We work in partnership with the University of Northampton to offer Schools Direct Initial Teacher Training and to ensure that you leave us well equipped to embark upon your career in the classroom. The schools in our alliance offer a diverse range of experiences from small village schools to large urban schools and everything in between.

We ensure you are fully supported to get Qualified Teacher Status (QTS). In addition to QTS you will also graduate with a Post-Graduate Certificate in Education (PGCE) which includes 60 credits towards a full Master's degree. Our School Direct training course is ideal for trainees who are looking for hands-on in-school training, learning from teachers who deliver lessons every day, as well as pedagogy and theory from the University of Northampton. We have a good record of employment with our trainees, many of whom go on to gain employment within our alliance.

Please contact us for more information, or to arrange a visit to our school.

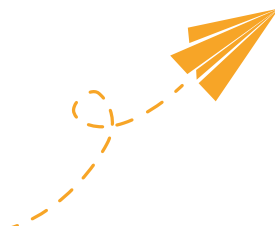
Upton Meadows Primary School



Contact us

01604 683 850
lois.beshiri@uptonmeadows.co.uk
bursar@upton-pri.northants-ecl.gov.uk

Upton Meadows
Primary School Alliance
Upton, South Northampton.





www.teachnorthamptonshire.com